

# ZANA FOCAL POINT

## *Ingredients...*

Affinage INFINITI - 4.53 & 9.03

Affinage Lite Bleach

Affinage Converter

Affinage Crème Developer - 3%/10vol

Affinage MODE ColourCare Shampoo & Conditioner





# ZANA

## FOCAL POINT

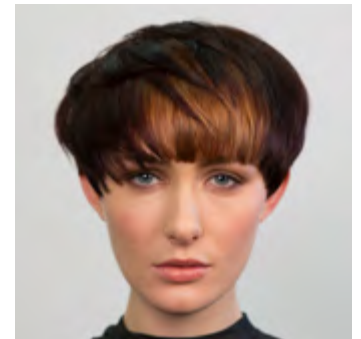
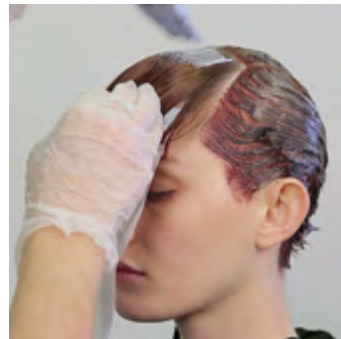
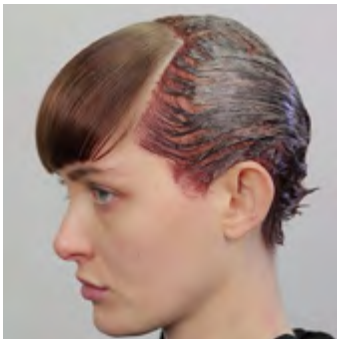


***“This simple technique refreshes colour and gives hair a healthy glow whilst creating a point of interest in the haircut.”***



- 1 The hair was sectioned to create a front focal point.
- 2 The remaining hair was coloured using INFINITI 4.53 mixed with Converter to a ratio of 1:2 and developed for 25 minutes. During the development, the front section was cleansed to remove existing colour build up, using a mix of equal parts: Lite, 3%/10vol AFFINAGE Crème Developer, ColourCare Shampoo and water. Visually developed.
- 3 The hair was washed with ColourCare Shampoo and, at the basin, the front focal section was toned with INFINITI 9.03 mixed with Converter to a ratio of 1:2. Developed for 20 minutes. The hair was then washed with ColourCare Shampoo, followed by ColourCare Conditioner.

**TRACEY'S TOP TIP** This look has to be frizz-free so use straightening irons to finish. On this occasion, we choose 1 full focal point, but this could be split to show different colour effects.





*Zana loves...*

Kitoko ARTE Super Sleek Cream

