

# DONATELLA

## ALTERNATE SECTION

### **Ingredients...**

Affinage INFINITI - 3.352

Affinage b:RED Refresher - Copper

Affinage Intensives 0.4

Affinage Lite Bleach

Affinage Converter

Affinage Crème Developer - 3%/10vol

Affinage MODE ColourCare Shampoo & Conditioner





# DONATELLA

## ALTERNATE SECTION

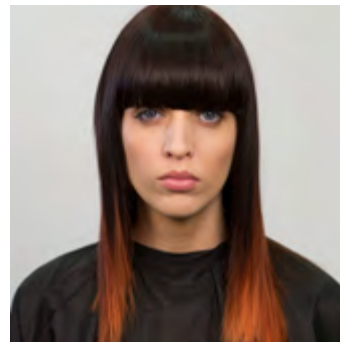


*“This colour fuses classic & contemporary techniques to give a fresh twist on ombre or peek-a-boo colouring.”*

For this look, we worked with the model's original lighter ends.

- 1** The hair was sectioned to create two triangle shapes on each side of the head.
- 2** The triangle sections were pre-lightened with Lite mixed with 3%/10vol AFFINAGE Crème Developer. The remaining hair was coloured with INFINITI 3.352 mixed with Converter to a ratio of 1:2. Total combined development time was 20 minutes.
- 3** The hair was washed with ColourCare Shampoo and then dried and sectioned to the original section pattern. It was then coloured using AFFINAGE Meches and a combination of b:RED Refresher Copper and the following formula: 20g INFINITI 7.51 + 5g Intensives 0.4 mixed with Converter to a ratio of 1:2. The models original lighter ends were then coloured with b:RED Refresher Copper, to create an ombre effect. Total development time was 15 minutes. The hair was then washed with ColourCare Shampoo, followed by ColourCare Conditioner.

**TRACEY'S TOP TIP** This technique works well with vibrant tones and could be easily adapted using bold fashion shades like Colour Dynamics. It's ideal for an in-salon "top up service" to keep the colour fresh.



# *Donatella loves...*

Kitoko ARTE Shine Sensation

